



Stained Glass

Ed Eich, Manager

**Kathy Villani
Assistant Manager**

Stained Glass Group Update

We've added several new students to our Stained Glass group on Friday mornings. They are learning to create sun catchers and will soon be moving on to glass panels. We also have group members who are working on glass boxes and lampshades as well as their own creations. The learning curve for stained glass is short – in a few weeks, you'll have glass creations to hang in your windows. Patience, attention to detail, and practice are key – the same as in woodworking. Come on and add some glass to your wood projects!

Gary Wright has just finished his fishing eagle – a beautiful glass panel with lots of detail. Outstanding job, Gary! It looks terrific!





Special Projects, Website and CNC

Hans Zassenhaus, Manager

Special Projects:

We are always in need of VWC Members to assist in working on Special Projects. Any member can select a Special Project from the **Green Binder** at the front Desk. Simply choose a project, ensure that you have entered your name on the sheet in the “Assigned To” space and then proceed to fulfill the requirements. When you have finished the project, put a piece of purple tape on the project, store it in the Special Projects Area of the Shop AND notify the Front Desk that you have finished the project. Many projects will require less than one-hour to complete.

The following are statistics for period February 13 – March 10, 2019:

Special Projects Accepted:	15
Special Projects completed:	15
Total contributions to the VWC:	\$898
Total Hours Worked	55

Pre-Made Items managed by Bernie Harkins

Items Sold	244
Total Contributions:	\$ 2552

Thanks to all VWC members who contributed their time and talents in working on these Special Projects and Pre-Made items.

Website:

If you have an idea of how to improve the website please send your suggestions to woodshop@thevwc.org.



Administration – Front Office

Anne Bell, Manager

HELP WANTED - STILL!

We will need 15 or more volunteers who are willing to work in the front office either at Eisenhower or Rolling Acres.

Training must start soon so that you can get hands on training now and be ready when the new shop opens.

If you are interested, call Anne Bell at 352-350-2416 for additional information.



Member Merchandise

Bob Bell, Manager

Nothing to report.



Library

Mary Ann Main

No report this month.



Education

Deb Larouere

Education has no report this month.



IT (Information Technology)

Current efforts revolve around daily support of existing IT systems such as the Front Desk and Electronic Doors. Planning for off season maintenance work and for requirements for the second location are ongoing. IT Clean-Up and Maintenance Day will be Sunday, March 24. We are attempting to gain 501 c3 status with

Department Reports March 12, 2019

Microsoft to take advantage of special pricing they have for Non-Profits for their Microsoft Office Products. We require documentation from the Federal Government IRS stating we are a valid 501 c3 that is no more than 90 days old. IRS has indicated the letter we need, will be here shortly. IT is going to start a formal IT Asset Management program to better track IT equipment over the coming months.



Lumber

Stephen Yovan, Manager

We just received a fresh supply of birch plywood both 4' x 8' and 5' x 5' in various thicknesses.



Toys

Conway Williams, Manager

The VWC Toy Department continues their strong start to 2019

We participated in Hoedown Days On Saturday February 9th where we raised \$133.00 in donations and helped children assemble pocket cats and totes which they could take home.

We also participated in Toys on the Square on Wednesday February 13th where we raised \$89.00 from Toy Sales and \$59.00 from cash donations totaling. Both of these events suffered with small crowds and low activity levels caused by the unusually cold and windy weather.

We just received a donation from Joe Stone and his Wednesday Euchre Group for \$450.00.

The Elves and Painters continue their hard at work!

- They produced 1248 Toys in February.
- This gives us a year to date total toys produced at the end of February of 2,250 which is 686 toys ahead of last years' record pace.
- So far in March we have produced an additional 344 toys.

On the shipping side we are also picking up the pace.

- In February we made five shipments totaling 1,035 toys with a donation value of \$6,678.00.
- This brings our year to date toys shipped, at the end of February, to 1175 Toys with a donation value of \$8,388.00.
- So far in March we have shipped an additional 48 toys with a donation value of \$238.00.

Looking ahead, we will participate in Toys on the Square at Spanish Springs on Tuesday March 19th (Note the revised date). Please come out and support the Toy Team at this event.

Department Reports March 12, 2019

At year end and early this year we were experiencing problems with the Laser not cutting many of our previous toys efficiently and effectively. I am pleased to report that working with the Technology and Maintenance Groups, they will be developing a formalized program to ensure that the Laser is kept in top running order. After an initial cleaning, most of our problems of the recent past have been either eliminated or significantly reduced. We will continue to work together to further fine tune the process for optimum results. We continue to expand our training on both the Epilog Laser and the CNC machine.



Safety and Turners

John Herega, Manager of Safety and Turners

TURNERS GROUP

The turner's group monthly meeting will be held in the wood shop Tuesday March 19, 2019 promptly at 7:00PM in the shop. Please bring a show and tell item.

The demonstrator this month will be our very own **BOB MARCEREAU**. He will demonstrate the technique for an **offset turning**.

We are looking for members that would like to demonstrate their skills or techniques to the turners group, for the edification of the members. Anyone interested please contact John Herega. We bring in various demonstrators from local clubs and surrounding areas, we are looking for demonstrators that are new to the group, and we would love for our very talented members to share their talents with us. Any suggestions or ideas are welcome

Following the meeting there will be a social period and demonstrator critique. Snacks will be provided, bring your choice of beverage.

APPARELL

There is a limited supply of woodshop caps available, both carvers and general membership, see John Herega or front desk personnel.

VWC apparel, shirts and hats are available at Custom Apparel 3451 Wedgewood Lane, Buffalo Ridge Plaza, rt.466. Aprons, smocks, respirators, dusk masks, safety glasses and side shields are available in the shop. Inquire at the front desk or contact John Herega.

SAFETY

The next Safety Committee will be **Monday March 25, at 9:30** am in the library. Any member wishing to join the safety committee is welcome to attend the meeting(s).

ROUTER SAFETY TIPS (continued):

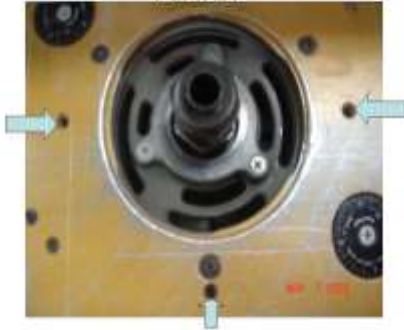
❖ USE SAFETY DEVICES:

- When working with a router table set-up, use a push stick, paddle(s), a block or a sled designed for use with a router table, to move the work-piece past the cutter.
- Always wear proper ear and eye protection. Routers create an extremely loud, high pitched noise that could permanently damage your hearing. And, since they're notorious for **throwing** chips and dust, eye

Department Reports March 12, 2019

protection is a **must**. If you are planning to do a lot of routing.....or will be working with potentially toxic woods.....a respirator is also highly recommended.

WHAT IS THE PURPOSE OF THE
THREADED HOLES IN THE ROUTER
PLATE?



WHAT IS THIS?



ANSWER
STARTER PIN

- When routing an irregular shaped workpiece with a piloted bit on a router table, always use a **Starter Pin** to help you ease your work-piece into the rotating bit without *snagging*



❖ THE SHOP ENVIRONMENT:

- ❖ Be sure the area is clean. Excessive sawdust on the floor can jeopardize your footing.
- ❖ Be aware of the surrounding area, be sure there is adequate clearance for the size of your workpiece and there is no clutter in the area.
- ❖ Keep observers at a safe distance; **don't be distracted by others.**

❖ HOLDING THE WORKPIECE:

- Whenever possible, always clamp your workpiece firmly to a bench or top or other surface before working on it with a hand held router.
- If your using a hand held router on a workpiece that is too small to grip in a vise or with a clamp use a non-slip router mat to hold it while you make your cuts

- When working with a router table, use a feather board to hold your workpiece firmly against the router fence during operation

❖ **MAKING THE CUT:**

- **YOU SHOULD NEVER PUT YOUR WORKPIECE BETWEEN THE FENCE AND THE ROUER BIT!**



- Do not face the routers discharge path when operating.
- If the router work tends to ride upwards and requires extra pressure to feed, turn off the power immediately. This indicates the bit is dull, it is slipping out of the collet, the collet and/or nut may be dirty, or you have selected the wrong bit design.
- Don't force-feed or overload your router.
- **NEVER TAKE TOO MUCH OF A CUT IN A SINGLE PASS!** For maximum safety (and smoother cuts) take multiple light passes.
- Whenever possible, feed your workpiece into the router, **against** the rotation of the cutter. In those instances when this is not possible you must make a "climb-cut" (with the rotation of the cutter).
- It is more important that you take multiple light passes instead of a single heavy one.
- Feed the router (or workpiece, in the case of a router table operation) at a slow, steady pace.
- Feeding too slowly or dwelling during the cut will overheat the bit, causing it to lose its temper....and burn the workpiece as well.
- Feeding to rapidly will produce a rough cut.

By following these simple precautions, your work with this highly versatile tool will be safer....and your results will surely be improved.

THOUGHT FOR TODAY.
WOODWORKERS ARE...KNOTTY!



Carvers

Pete Bankowski

Nothing to report.



Certification & Monitor Training

Dick Besler

Certification is scheduled for 3-21. Monitor training was/is 3-6, 3-20 and 3-27. This is the last month we will be doing 3 sessions within the month.

The April certification training day has been identified as April 11.

Please remember that on the days of certification, the shop is closed to all members EXCEPT monitors, “students” and instructors!



Vice President

Jim Spallone

Our **“PEN for TROUPS”** program, headed up by Elliot Schantz, is progressing quite nicely. Members have produced 50 pens since the first of the year and we are nearing the 1,000 pen threshold since inception of the program.

It is our intent to have club members who served in one of the branches of the armed forces produce the 1,000th pen. Elliot is looking for members who served in the Coast Guard and Merchant Marines. If you did, kindly contact Elliot Schantz. 954-608-3336

Also, please contact Elliot if you have a relative serving overseas.

Department Reports March 12, 2019

REMINDER: Volunteers are needed for the “PENS for TROUPS” project. We meet on the 4th Tuesday of the month beginning at 4pm and lasting no more than two hours. All tools and materials are provided. Come and enjoy turning with your fellow members.



Dave Adamovich



Glen Croteau

Maintenance/Shop Administration

ON BEHALF OF THE MAINTENANCE DEPARTMENT OF THE VILLAGES WOODWORKERS CLUB, I WANT TO EXPRESS MY SINCERE **"THANKS" TO EACH AND EVERYONE OF YOU** FOR TAKING TIME FROM YOUR BUSY SCHEDULES TO PARTICIPATE IN OUR SHOP SPRUCE-UP DAY TODAY.

CLEARLY CONDUCTING THIS EFFORT WITH A SMALL DEDICATED GROUP PROVED, NOT ONLY SUCCESSFUL, BUT MADE ALL OF OUR JOBS MUCH EASIER WHEN INDIVIDUALS ARE TEAMED UP AND FOCUSED ON SPECIFIC JOB DUTIES... **SHOP COMPLETELY DONE BY 1 PM...** HOW NICE.

YOUR DAILY RESPONSIBILITIES ARE VERY MUCH APPRECIATED, AND CLEARLY THIS **"EXTRA EFFORT"** PROVES THAT EACH ONE OF YOU PLACES THE VWC IN HIGH ESTEEM... **HOW BLESSED ARE WE ALL.**

PVA Wood Glue

Part 2

PVA Wood Gluing

Another requirement that causes some confusion is that the surfaces to be joined must be smooth as possible. The common practice of “roughing up the surface” of the wood with sandpaper to create a mechanical bond simply does not hold true. Sanding weakens the joint because it damages the wood fibers. An ideal surface is one that has been planed glass-smooth.

It goes without saying that the surfaces must also be clean and be free of oils, finish, dirt, and dust. These interfere with the cellulose bond. Wiping with a solvent like acetone until the rag doesn't show residue is good practice before applying glue.

GLUE APPLICATION.

Department Reports March 12, 2019

Before breaking out the glue and using it on a project, make sure it's fresh and give the bottle a good shake before opening it.

When it comes time to apply the glue, the ambient temperature and the temperature of the wood can have an effect. Colder temperatures (less than 50 degrees) lengthen the open time and the time it takes to fully cure. (You should never allow the glue to freeze.) Conversely, as the temperature heats up, the open time gets shorter.

To apply the glue, a thin even film gives the best results. Use a brush or finger on small areas. For wide surfaces use a credit card or trowel with 3/32" notches.

CLAMPING PRESSURE.

Once the glue is applied, you only have a few minutes to bring the joint together and apply the clamps. But here is where it gets interesting. You don't need as much clamping pressure as you think. The most important element is a clean, tight-fitting joint.

If the joint fits properly, you only need enough clamping pressure (about 5 psi) to keep the wood from moving while the glue cures (about one hour). There's no need to use all of your strength when tightening the clamps. Just make sure the clamping pressure is evenly distributed.

Clamping moldings, miters, or end-grain joints while the glue dries often poses a challenge. You hear it all the time. End-grain glue bonds are weaker than other joinery methods. And that's generally true. But *Tightbond Quick & Thick* can add some muscle to a traditionally weaker joint.

This product is a variation of PVA wood glues like other *Tightbond* products for woodworking. It's been specially formulated to be much thicker with a shorter open time (2-3 minutes) than traditional PVA wood glues. It was originally developed for applying hard-to-clamp molding and trim. But it also excels at gluing end grain. It doesn't soak into the end grain, which can starve the joint. You're left with a stronger glue bond.

CLEAN-UP.

After the clamps are on, don't touch anything for at least 10-20 minutes. Then you can go back and scrape off the partially dried glue. Any residual glue can be sanded off after it completely dries. I advise against wiping the glue with a damp rag. It forces glue into the wood that can show up in the finish. A damp rag also introduces excess moisture that can affect the joint strength.

Gluing up a project is something we often don't give much thought to. Understanding how PVA glue works can help you obtain stronger joinery.



Jerry Leinsing



Lowell Sundermann

Woodworking Technology

Lets start the Woodworking Technology report with the laser. Bob Lavarney has trained to date 31 members on using CorelDraw and operating our Epilog laser engraver and cutter. We

Department Reports March 12, 2019

have agreed the thirty one students will be formally certified as operators. This will be a straight forward process, but we want the instructor and student to look at each other and agree they are ready to "fly solo" on the machine. These students will be listed as completing course E609.

The laser machine has needed some major and minor maintenance issues. Most recently we have learned that the final mirror and lens, under our current use, needs at least weekly cleaning. Dave Adamovich has implemented this routine maintenance and the laser performance is now much more consistent.

Concerning the CNC machine. Here again training has been robust. Twenty nine students started the process for learning the design process and eventually operating (if so interested) the CNC. Drop-out on the road to operator has been higher than expected. First, realize that of all our membership, less than a dozen members are allowed to operate the 37" sander. If you mess up on the sander you will likely only ruin the project, or damage parts we can replace. For the CNC if you mess up, you can hurt yourself and/or others around the machine, and damage parts that may mean the machine cannot be economically repaired. This is not meant as a scare tactic; but, training is very important.

Jerry and Lowell are committed to review our training scheduling to shorten the time from start to certification starting in the fall. We have time this spring and summer to tweak the training process to meet the needs and desires of the membership. All this said, we are proud of the advancement of the technology to date. We continue to meet visitors to the shop that talk about their experience and ownership of CNC technology. Our club management has done the right thing to offer and support this approach to woodworking for the future of our membership.



Chair, Board of Directors

Mike Cromwell

A little over a year ago, the membership elected me to the Villages Woodworkers Club Board of Directors. Just two months ago, the Board members elected me to be the Chairman. Since the first election,

Department Reports March 12, 2019

I've been exposed to a steep learning curve. Since the latter election, that curve has gotten considerably more challenging in both breadth and depth. I'm working at it and receiving extensive assistance from many more experienced leaders.

Though I've been a Club member for almost four years, there are many of you that I simply do not know. And I suspect that many of you don't connect my name with my face, as they say. Please feel free to introduce yourself whenever you like. It'd be my pleasure to get to know you and to share your perspective on the shop and Club.

That brings me to the final topic I'd like to share. We are members of the Villages Woodworking Club. Put equal emphasis on the last word 'Club'. This club is that type where its members are expected to contribute to its success for the benefit of all. We are not like AAA or NRA members where we might take the position that payment of our dues is sufficient participation. In our Club, some are motivated to give a lot of their time and resources; a large number of others give less but still significantly to fulfill the Club's needs. All are expected to give to the general well-being. Please enjoy your membership and enhance your experience and that of your fellow club members by being alert to opportunities to contribute, be it in a large or small way.



President

Mike Borfitz

Conversations and meetings continue on the second shop; unfortunately, no conclusions or new information is available for disseminating! Stay tuned!

I too would like thank you all of you who are so conscientious and give of your time to make our Club the best.

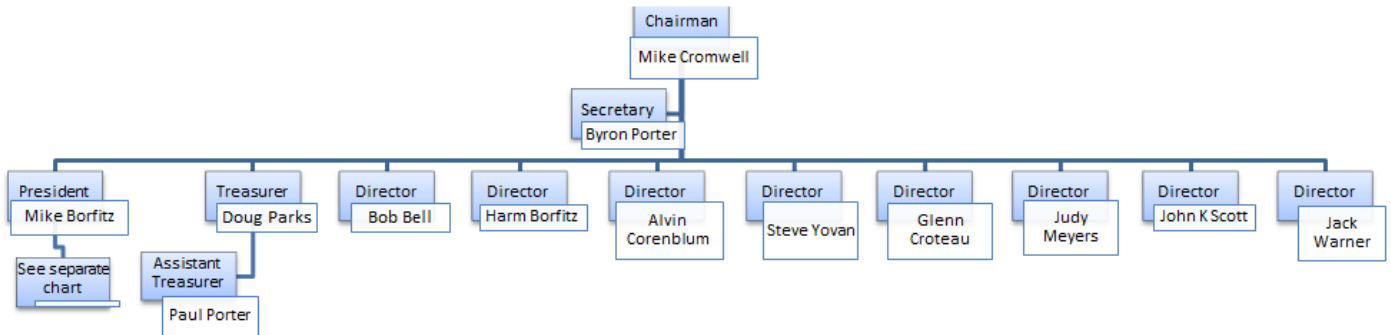
A recent "situation" prompts me to caution all key holders for the woodshop that each has a special responsibility. **If you use your key to access the building in off hours, you must remember to check that all doors are locked and the alarm system is set when you depart the building. The same goes, of course, for any member who is the last one to leave the shop!**

For your information, and/or reminder, following please find the organizational charts for the Club:

The Villages Woodworkers Club

Board of Directors

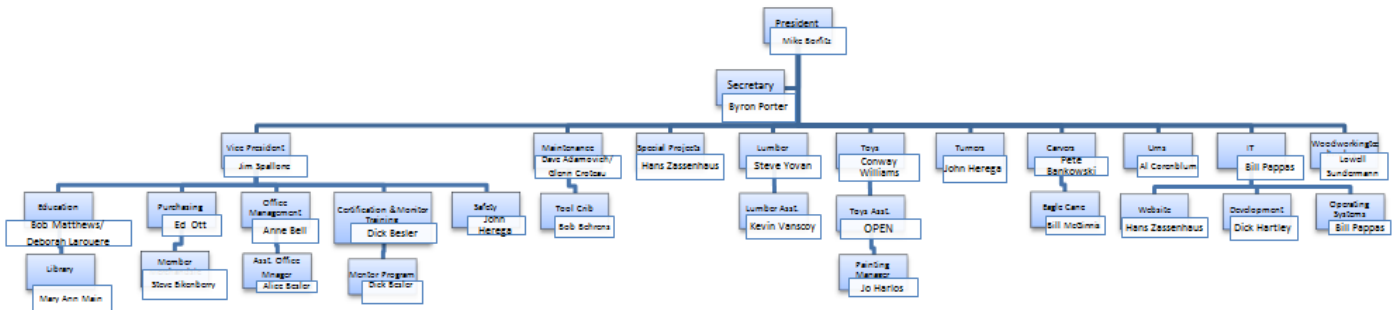
- * Provides overall governance of the VWC
- * Develops and approves Policy, Budgets and all expenditures greater than \$500.00
- * Maintains, Revises and Enforces By-Laws



The Villages Woodworkers Club

Officers and Responsibilities

- * Provide day to day management that ensures safe and efficient operations





The Club's History

Max Bohnstedt

A friend of mine sent me a collection of Andy Rooney sayings, one of which was “The first time you grandchild grabs your little finger in their tiny fist you are hooked for life.” Most of us were hooked on making saw and sanding dust the first time we made a simple book shelf or foot stool or box.

We have this wonderful place to play with woodworking because on 01/01/01 Ron Gammon got a group of friends together to make toys for disadvantage children, being grandpas. We are fortunate to still have three of them still with us, Ron Gammon, Bernie Harkins and Dick Brady. We still have many other early members who made the woodworks club work for very good work in the community. By 2004 the year before the woodshop opened we had grown to 161, by 2005 when the woodshop was opened we had grown to 225 members and in 2006, the year I joined we had grown to 732 members.

The history of the club and its growth and service to the community was being stored in plastic tubs, corrugated paper boxes in the open. Mike thought that we could and should do better as stewards of the clubs history and ask for volunteers to do something with artifacts of our club. Having been out of service for a couple years I thought it might be away to get back in the saddle so I ask some questions and made some proposals.

Did we want a museum?

No we have better use for our space.

What form should the result take?

Primary will be digital so it can be on the website with a secondary hard copy backup current history images.

How should we display the result?

Put the hard copy of the current history images in 3 ring binders and add the digital images to the website.

What should we keep and not keep?

We have pictures of the show and tell projects and we can add the historic pictures and digital images to that history file.

What is yet to be done?

Scan the pictures which were mounted in a 3 ring binder so they can be added to the digital file